

Omnia[®] Assay Setup Guide on the PerkinElmer EnVision[®] Multilabel Plate Reader

NOTE: The PerkinElmer EnVision[®] Multilabel Plate Reader was tested for compatibility with Invitrogen's Omnia[®] Assay. The following document is intended to demonstrate setup of this instrument. For more detailed information and technical support of Invitrogen assays please call 1-800-955-6288, select option "3", then extension 40266. For more detailed information and technical support of PerkinElmer instruments or software, please call 1-800-762-4000 or by e-mail at productinfo@perkinelmer.com.

A. Recommended Optics

| Invitrogen part number | wavelength (nm) | diameter (mm) |
|---|--|---------------|
| Excitation Filter (PV00215) | 340/30 (or similar) | 15 |
| Emission Filter 1 (PV00315) | 495/10 (or similar) | 15 |
| Dichroic Mirror *contact PerkinElmer | General BS50 D400 or D400/D630 (LANCE or LANCE Dual) | |

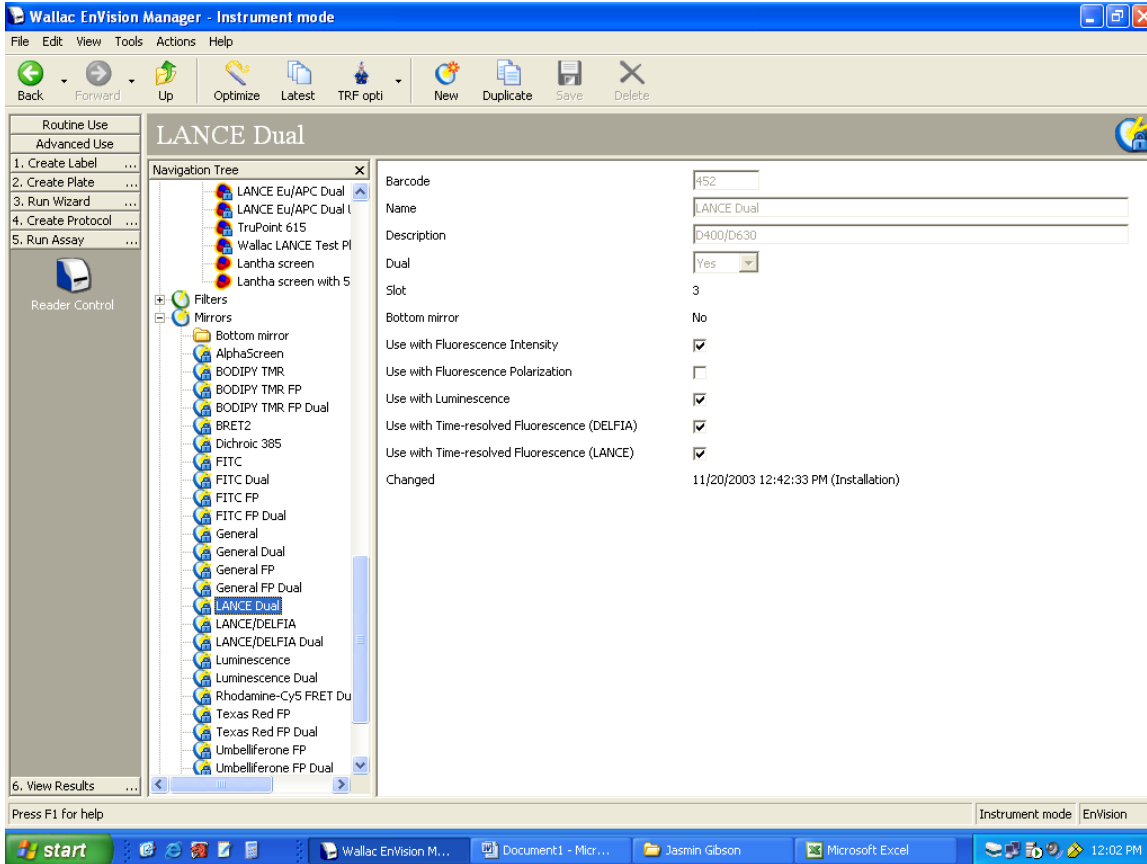
NOTE: Before beginning, you will need to install the correct filters in an appropriate slot. The slot number is not critical but the filters do need to be next to each other for the dual read. If they are not, the machine will give you an error message to switch them.

B. Instrument Setup

1. Make certain plate reader is turned on, and open up Wallac EnVision[®] Manager software on computer.

Setup Guide on the PerkinElmer EnVision® Multilabel Plate Reader

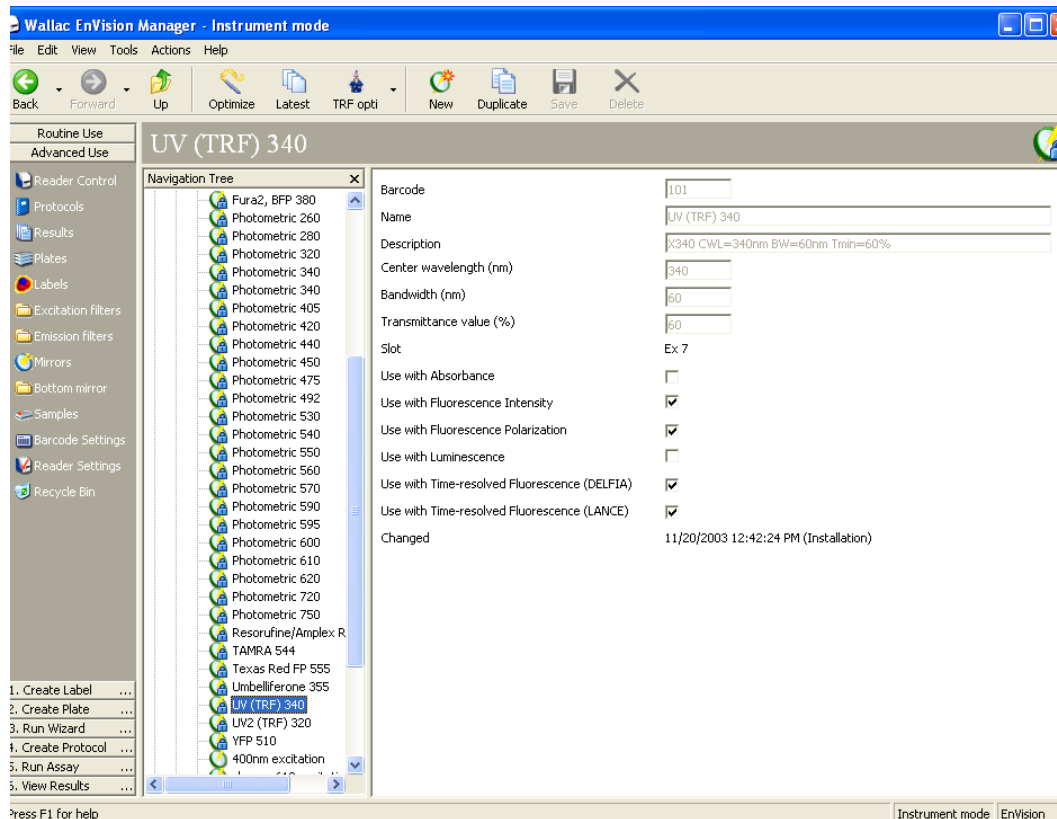
- In the Navigation tree area, scroll down to “Mirrors” and make sure that you have the appropriate mirror.



Have a question? Contact our Technical Support Team

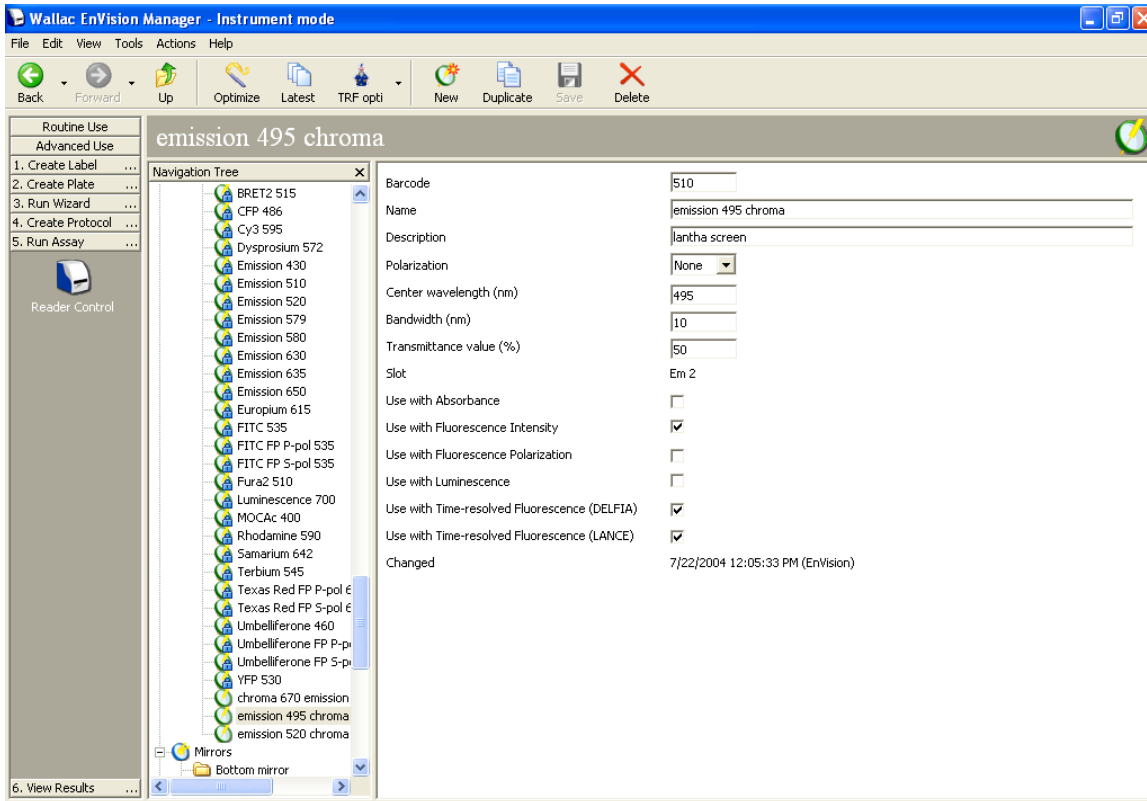
NA: 800-955-6288 or INTL: 760-603-7200 Select option 3, ext. 40266 Email: drugdiscoverytech@invitrogen.com

- In the Navigation Tree area, scroll down to “Filters, excitation”. Make sure that you have the appropriate excitation filter.



Setup Guide on the PerkinElmer EnVision® Multilabel Plate Reader

- In the Navigation Tree area, scroll down to “Filters, emission.” Select “New” and enter the 495/10 filter as shown in the following screen shot: Note that the barcode may differ, depending on the filter holder you are using.

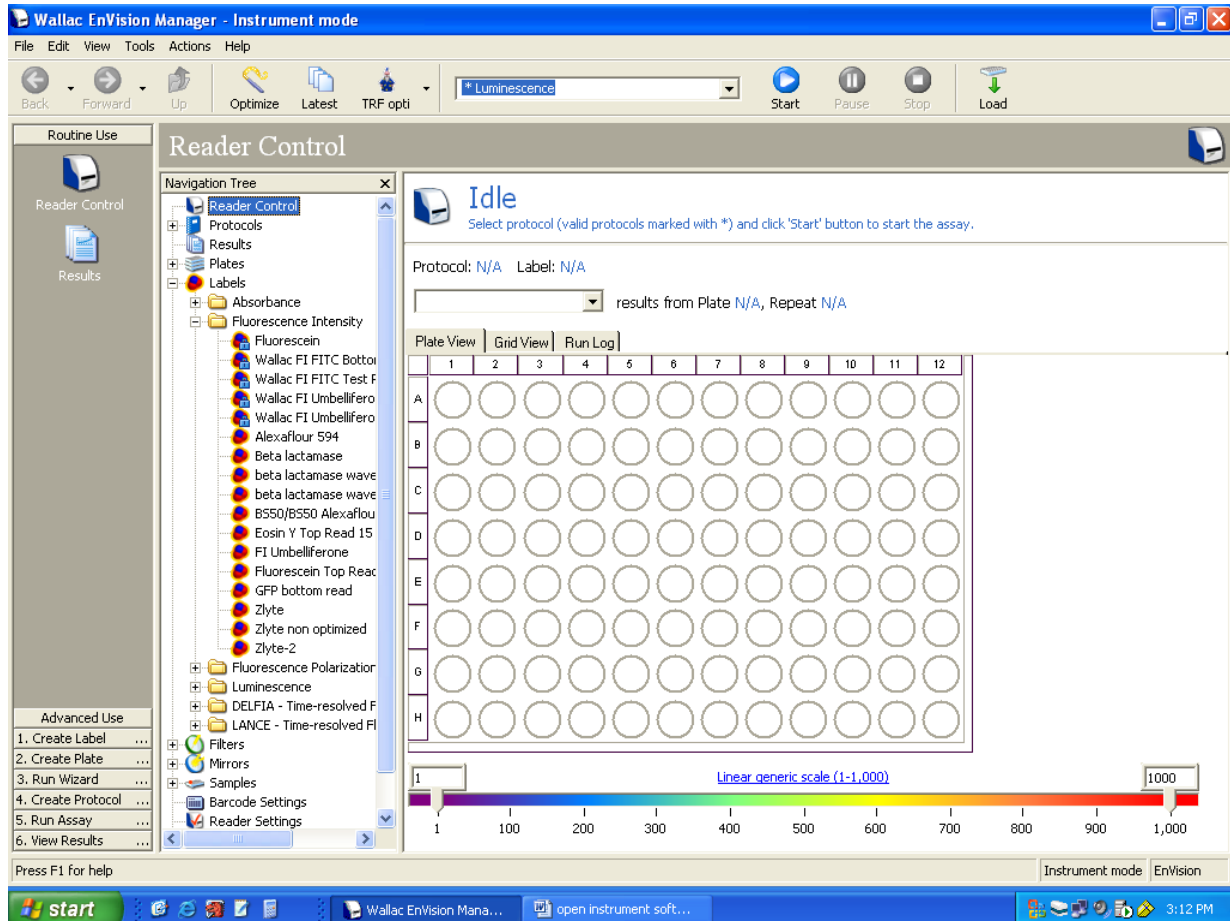


Have a question? Contact our Technical Support Team

NA: 800-955-6288 or INTL: 760-603-7200 Select option 3, ext. 40266 Email: drugdiscoverytech@invitrogen.com

Setup Guide on the PerkinElmer EnVision[®] Multilabel Plate Reader

5. Create a label program for the Omnia[®] assay by selecting “Labels”, then “Fluorescence Intensity” option, then “New.”

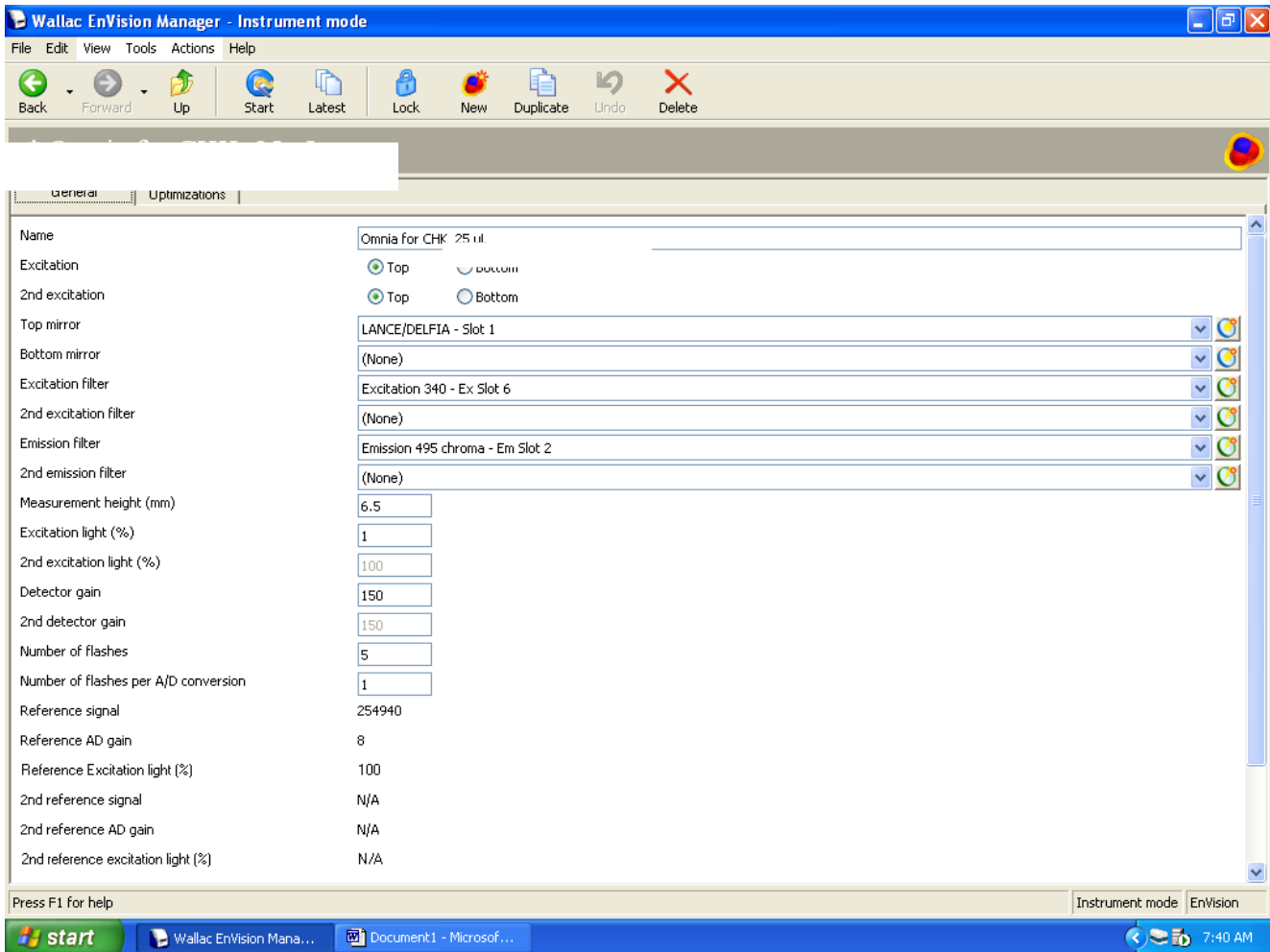


Have a question? Contact our Technical Support Team

NA: 800-955-6288 or INTL: 760-603-7200 Select option 3, ext. 40266 Email: drugdiscoverytech@invitrogen.com

Setup Guide on the PerkinElmer EnVision[®] Multilabel Plate Reader

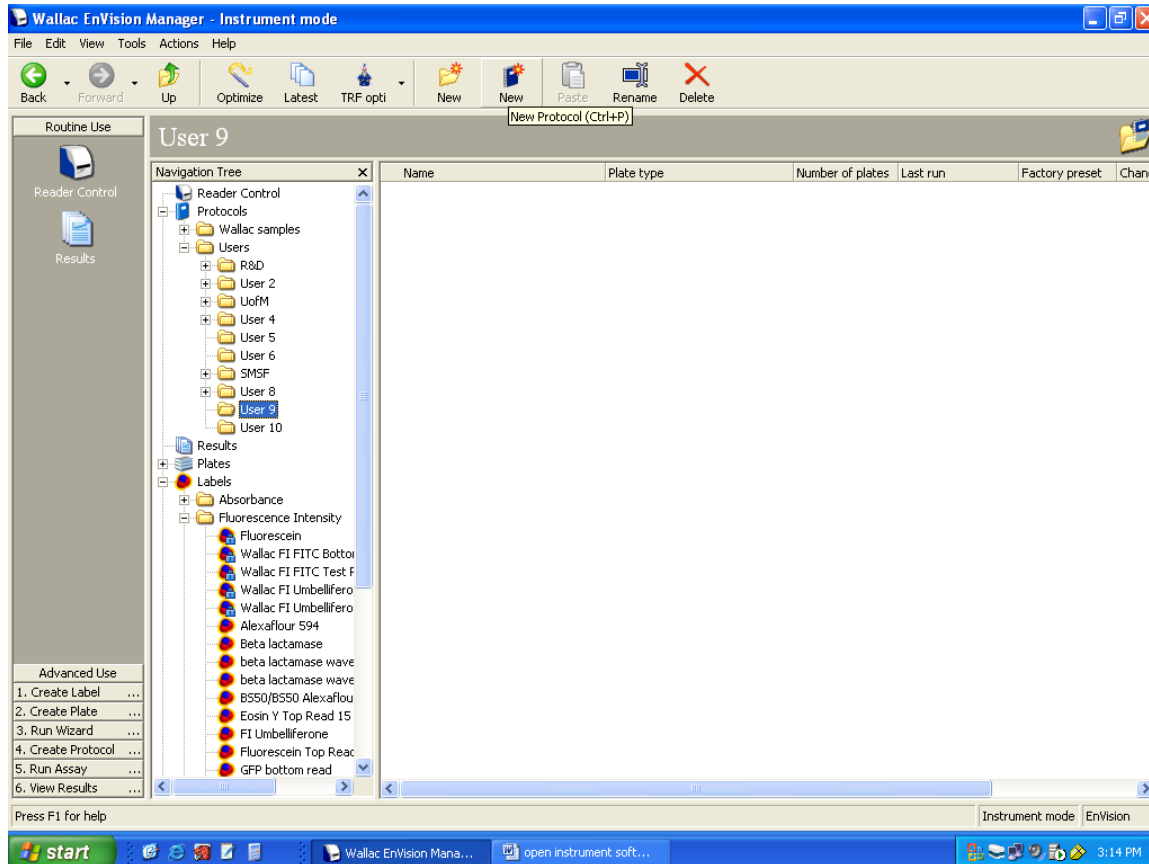
6. The following screen appears. Enter the information as indicated with the following settings, naming the label as desired.



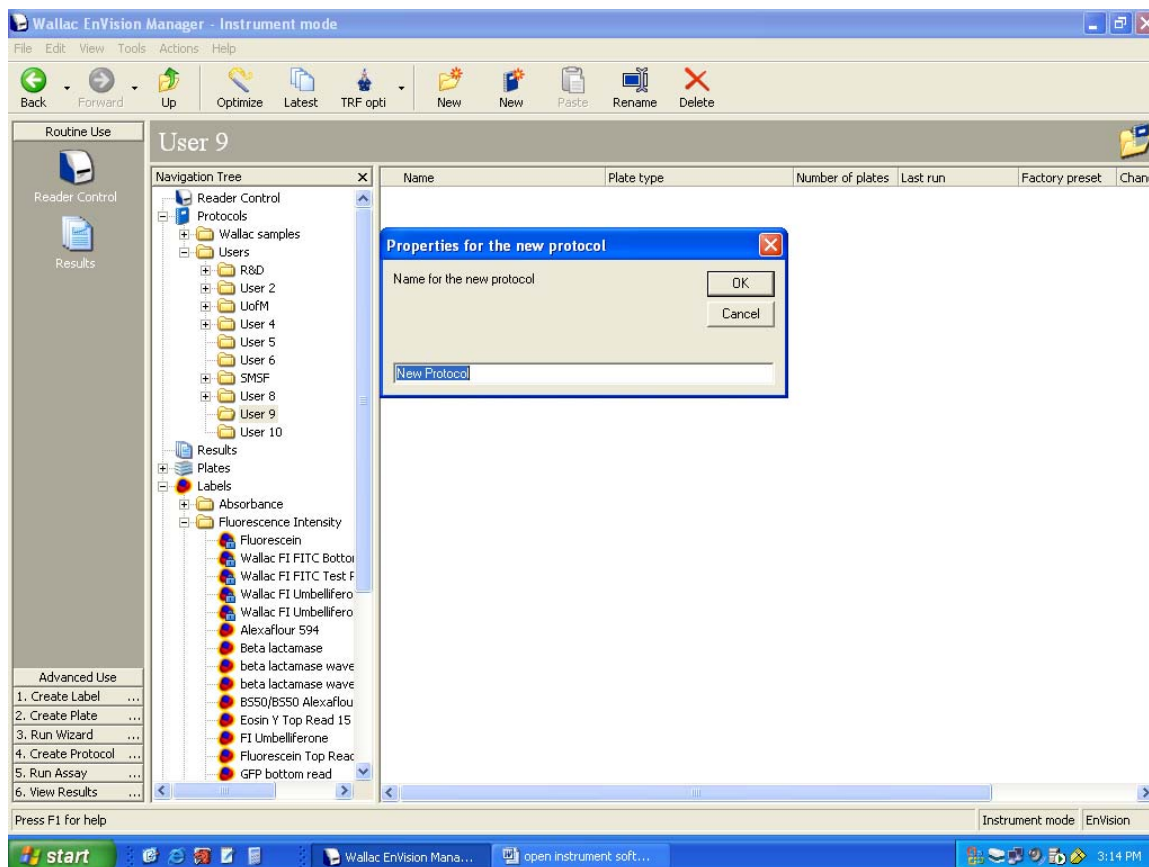
Have a question? Contact our Technical Support Team

NA: 800-955-6288 or INTL: 760-603-7200 Select option 3, ext. 40266 Email: drugdiscoverytech@invitrogen.com

7. Create a protocol for the Omnia[®] assay by selecting “New protocol”.



Setup Guide on the PerkinElmer EnVision[®] Multilabel Plate Reader

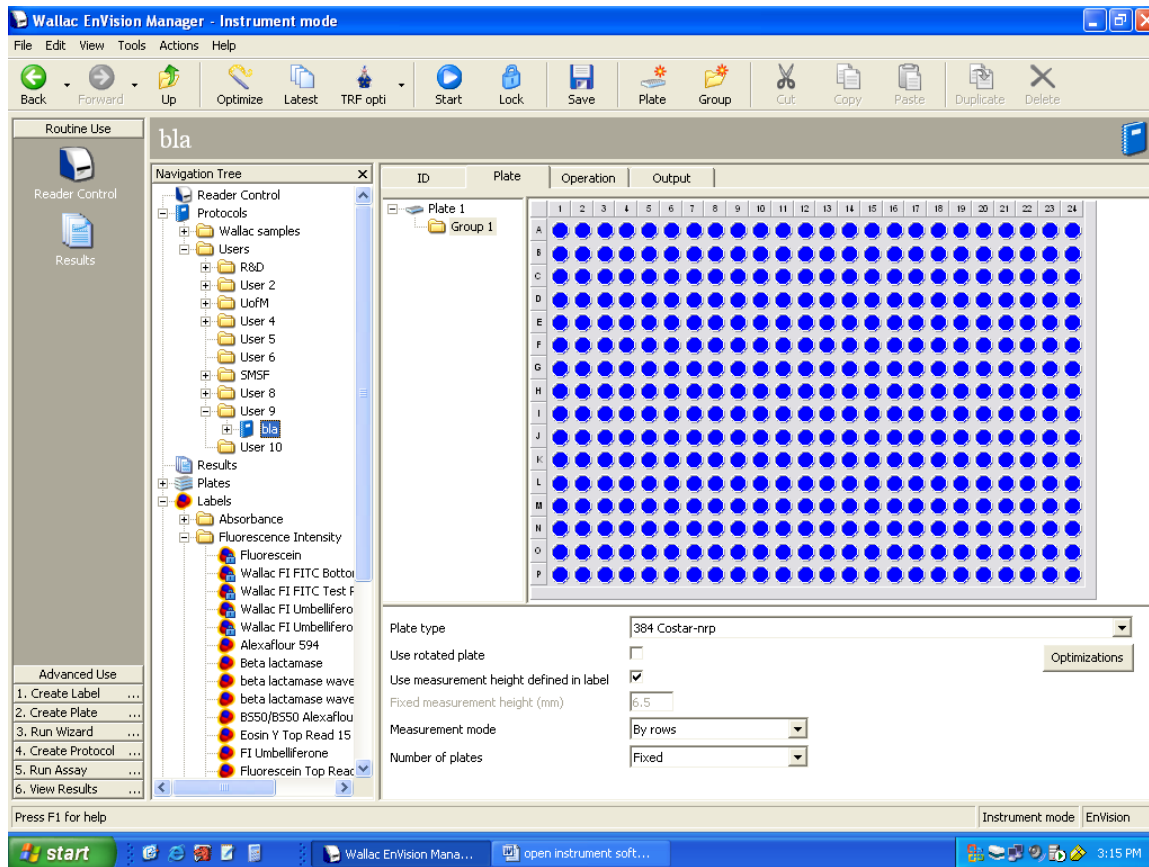


Have a question? Contact our Technical Support Team

NA: 800-955-6288 or INTL: 760-603-7200 Select option 3, ext. 40266 Email: drugdiscoverytech@invitrogen.com

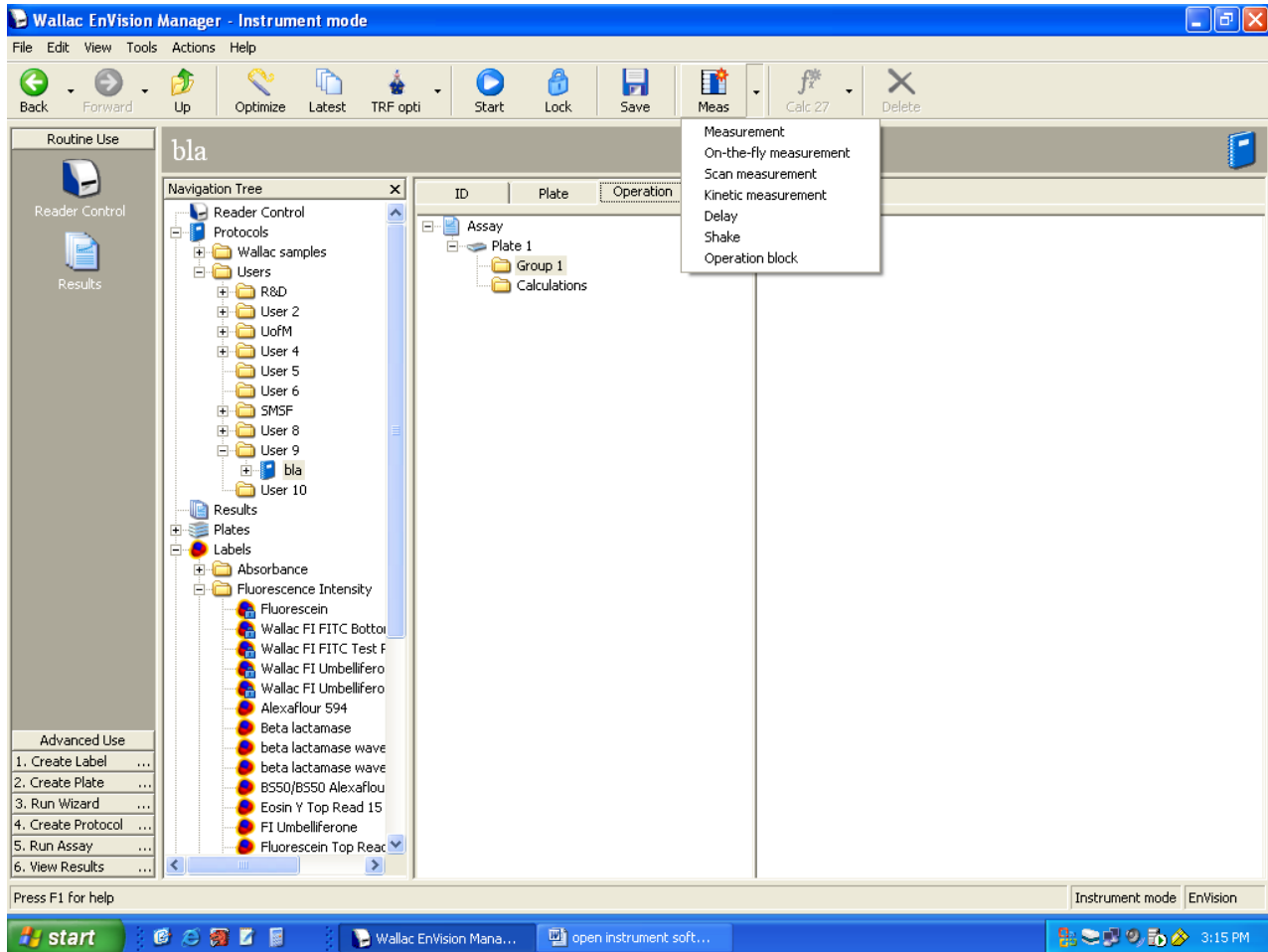
Setup Guide on the PerkinElmer EnVision[®] Multilabel Plate Reader

8. Select plate type. The EnVision[®] has many pre-set plate definitions.



Setup Guide on the PerkinElmer EnVision[®] Multilabel Plate Reader

- Set how the data is to be output by defining the Operation(s) required for this protocol. Click "Operation", Group then Measurement.



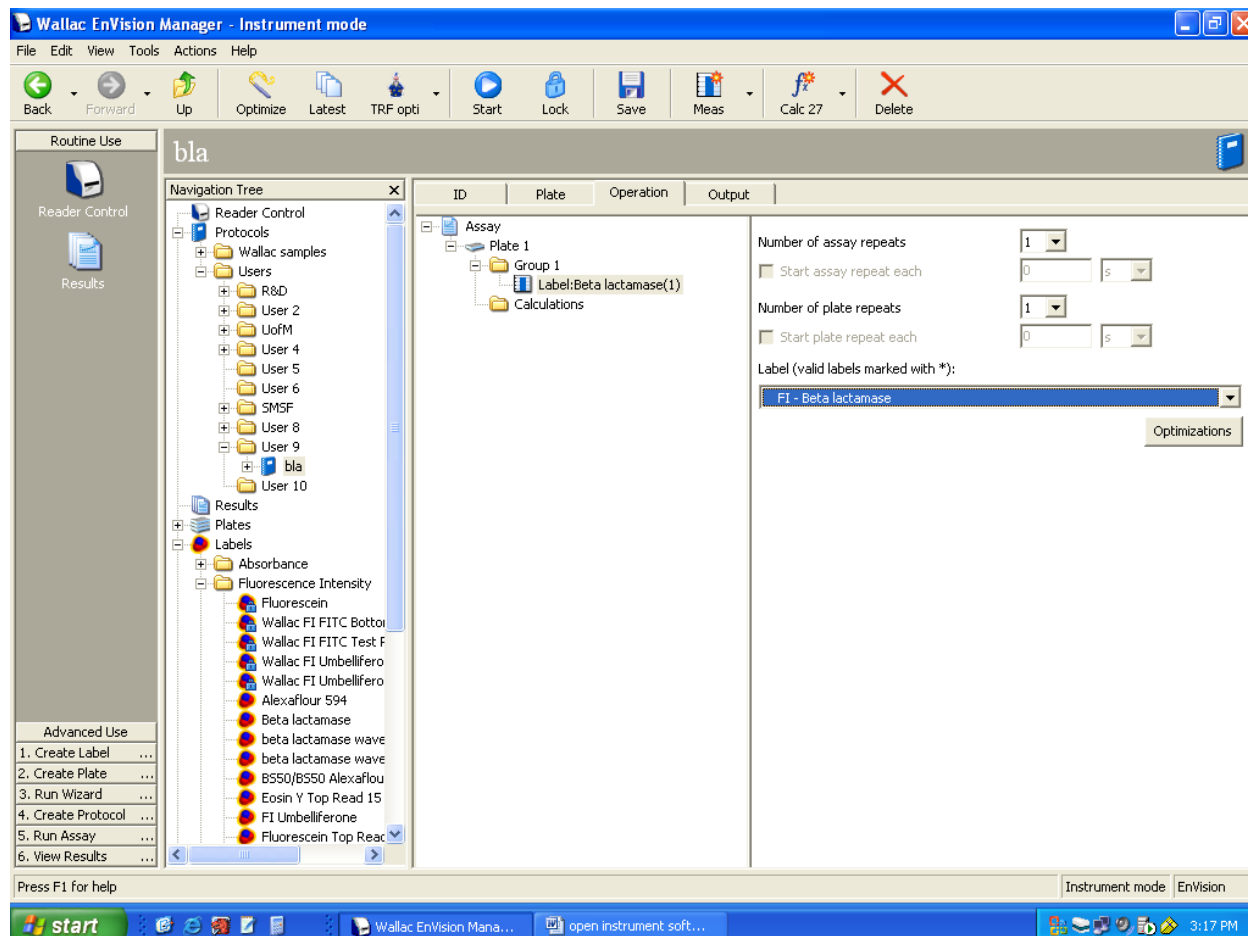
Have a question? Contact our Technical Support Team

NA: 800-955-6288 or INTL: 760-603-7200 Select option 3, ext. 40266 Email: drugdiscoverytech@invitrogen.com

Setup Guide on the PerkinElmer EnVision[®] Multilabel Plate Reader

10. Under operation select the label method to be used in this protocol. Select the Omnia[®] label method recently created.

For kinetic reads, or repeat cycles, select the number of plate repeats at 30 second intervals (enough for ~45-60 minutes per plate).



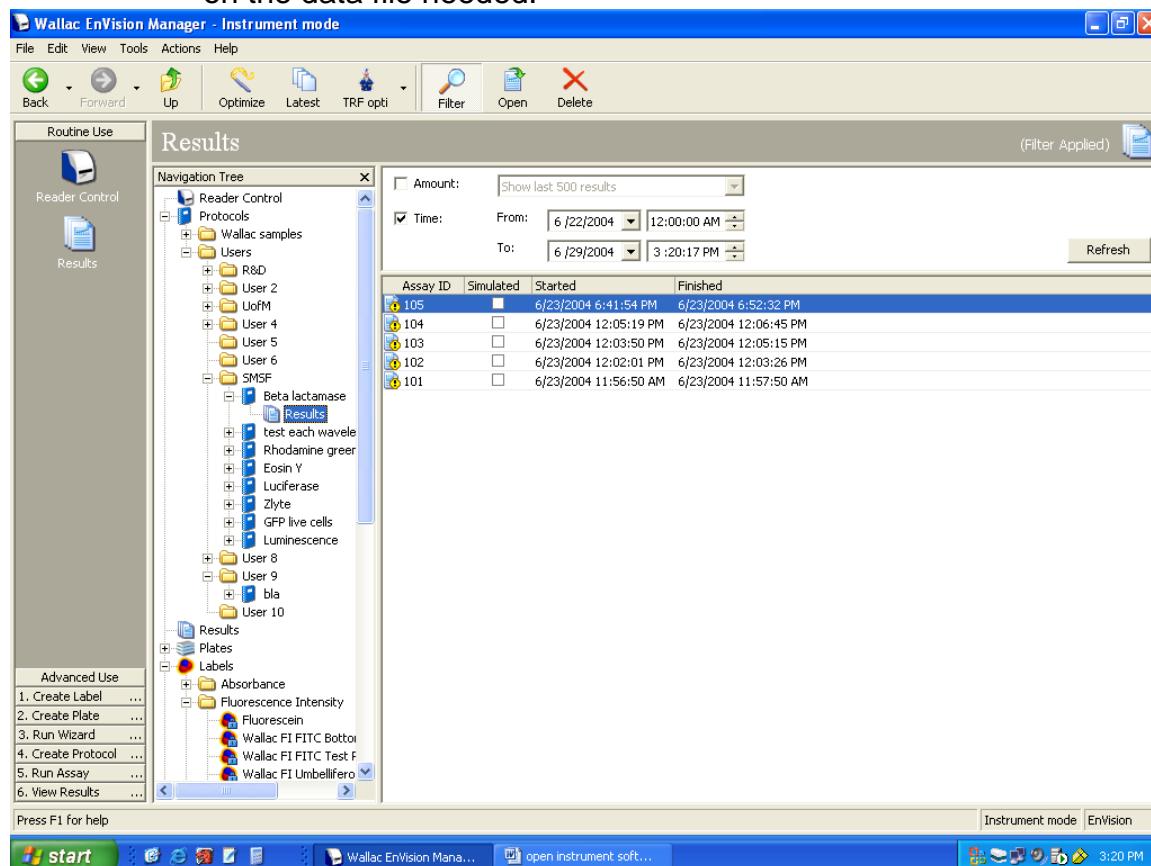
Have a question? Contact our Technical Support Team

NA: 800-955-6288 or INTL: 760-603-7200 Select option 3, ext. 40266 Email: drugdiscoverytech@invitrogen.com

Setup Guide on the PerkinElmer EnVision[®] Multilabel Plate Reader

11. Load plate(s) and run protocol by hitting the “Start” button. Once the read(s) is completed the instrument will prompt you to hit stop. Click “Stop”.

12. Check your results by selecting the Omnia[®] protocol created, then “Results”. The result screen will show data file for each run of the protocol. Double click on the data file needed.



Have a question? Contact our Technical Support Team

NA: 800-955-6288 or INTL: 760-603-7200 Select option 3, ext. 40266 Email: drugdiscoverytech@invitrogen.com