

# How to Upgrade to Vector NTI Advance 10.1.1.

**Note:** You need administrator privileges to your computer in order to install Vector NTI software. If you have any questions, please check our FAQs Database.

## From Version 10:

1. Download and install Vector NTI Advance 10.1.1 by double-clicking on the installer file and following the instructions.
2. The Vector NTI Advance 10.1.1 installation wizard will automatically detect the version 10.0 Vector NTI Local Database. Accept this database option. Upgrade will not affect the existing Local Database.
3. Once installation is complete, your existing version 10.0 License Number and Registration Key will work. They are automatically recognized and applied during installation.
4. Launch Vector NTI and accept the instructions for initializing the Database.

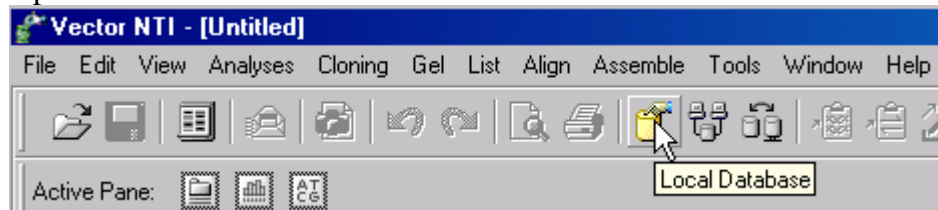
## From Version 9 or 9.1:

1. Check the compatibility matrix on the “Downloads” page to make sure you have the appropriate operating system and version combination.
2. Download and install Vector NTI Advance 10.1.1 by double-clicking on the file and following the instructions. Accept this database option. Upgrade will not affect the existing Local Database.
3. The Vector NTI Advance 10.1.1 installation wizard will automatically detect the version 10.0 Vector NTI Local Database. Accept this database option.
4. Once installation is complete, you will need a new License Number and Registration Key. Commercial users please contact [bioinfosales@invitrogen.com](mailto:bioinfosales@invitrogen.com), academic users can request a License Number and generate a Registration Key in the User Community.
5. Launch Vector NTI and accept the instructions for initializing the Database.

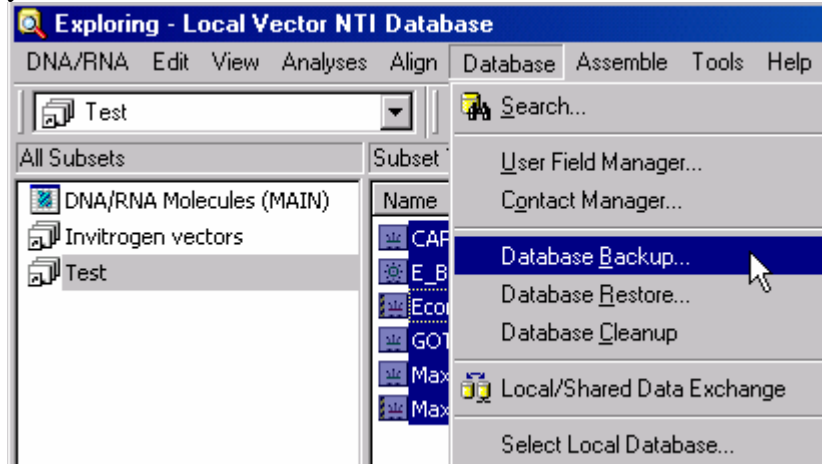
## From Version 8 or earlier:

### Option 1

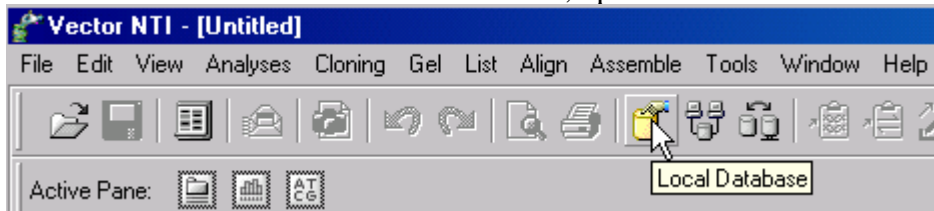
1. Check the compatibility matrix on the “Downloads” page to make sure you have the appropriate operating system and version combination.
2. Open the VNTI Local Database.



- From the Database menu option select Database Backup. This will copy all your Database files to a new folder.



- Please download Vector NTI Advance 10.1.1. Install the application by double-clicking on the file and following the instructions.
- Once installation is complete, you will need a new License Number and Registration Key. Commercial users please contact [bioinfosales@invitrogen.com](mailto:bioinfosales@invitrogen.com), academic users can request a License Number and generate a Registration Key in the User Community.
- Go to the Local Database and select Database Restore from the Database menu. This will restore your original Database and overwrite the Vector 10.1.1 database.
- You will need to import any updated Invitrogen Vectors manually. These are found on your C drive> Program files> Invitrogen>Invitrogen\_Vectors\_10\_1.ma4
- To add these Vectors to the Local Database, open the Local Database



then drag the Vector file (Invitrogen\_Vectors\_10\_1.ma4) into the Database window.

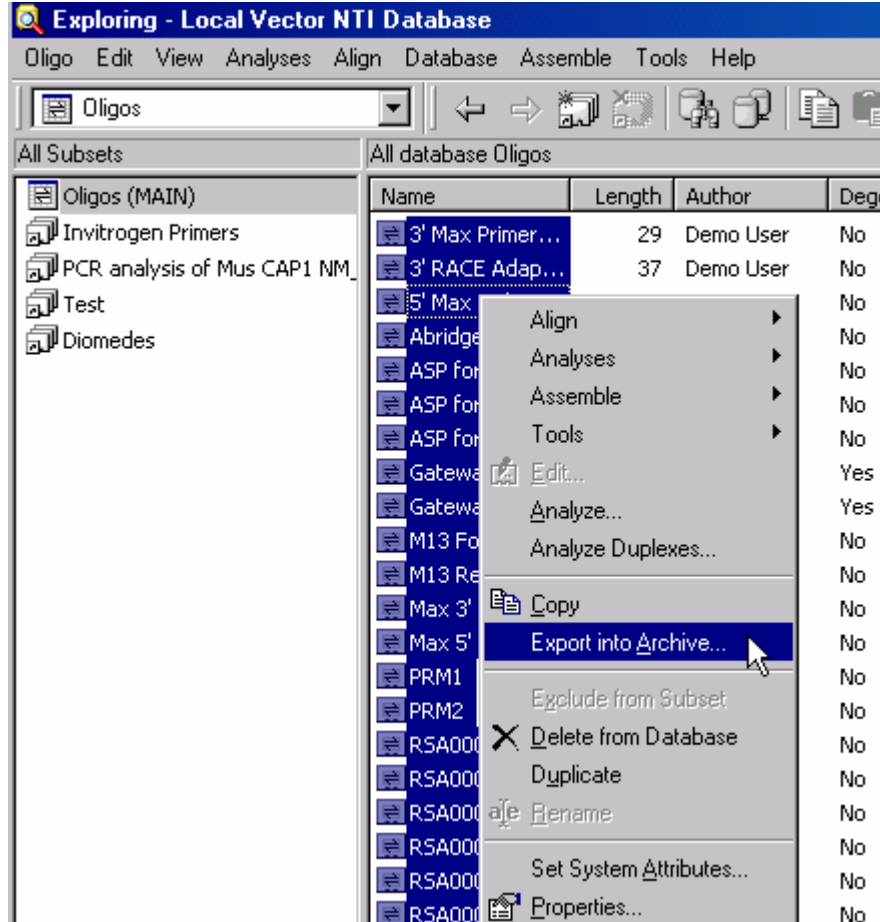
- Remove the older version of Vector NTI by going to your "Control Panel" and using the "Add/Remove Programs" option.
- Launch Vector NTI and accept the instructions for initializing the Database.

### From Version 8 or earlier:

#### Option 2

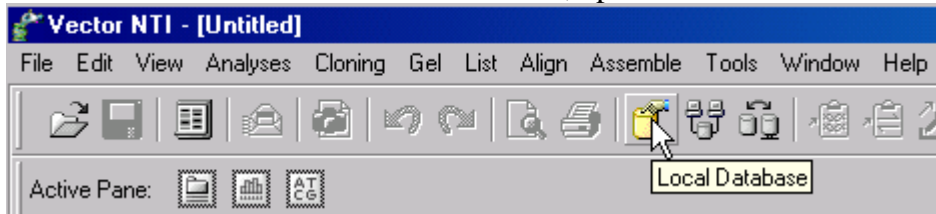
- Check the compatibility matrix on the "Downloads" page to make sure you have the appropriate operating system and version combination.
- Please create an archive file for each of the object types (DNA/RNA molecules, Protein molecules, Enzymes, Oligos, etc) of the Vector NTI Local Database.

Highlight all the molecules in the object type, right-click, select export into Archive.



3. Save the archive file to a network drive or removable medium. Note: the archive file extensions are as follows: **.ma4** for nucleic acids, **.pa4** for proteins, **.oa4** for oligonucleotides, **.ea4** for restriction enzymes.
4. Please download Vector NTI Advance 10.1.1. Install the application by double-clicking on the file and following the instructions.
6. Once installation is complete, you will need a new License Number and Registration Key. Commercial users please contact [bioinfosales@invitrogen.com](mailto:bioinfosales@invitrogen.com), academic users can request a License Number and generate a Registration Key in the User Community.
7. Go to your network drive or removable medium and drag & drop each of the object types into the Vector NTU Database Explorer. The Vector NTI Database will detect the archive format and ask you to verify the contents.
8. You will need to import any updated Invitrogen Vectors manually. These Vector are in a **.ma4** file found on your C drive> Program files> Invitrogen> Invitrogen\_Vectors\_10\_1.ma4

9. To add these Vectors to the Local Database, open the Local Database



- then drag the Vector file (Invitrogen\_Vectors\_10\_1.ma4) into the Database window.
10. Remove the older version of Vector NTI by going to your "Control Panel" and using the "Add/Remove Programs" option.
  11. Launch Vector NTI and accept the instructions for initializing the Database.
  12. Remove the older version of Vector NTI by going to your "Control Panel" and using the "Add/Remove Programs" option.
  13. Launch Vector NTI and accept the instructions for initializing the Database.